

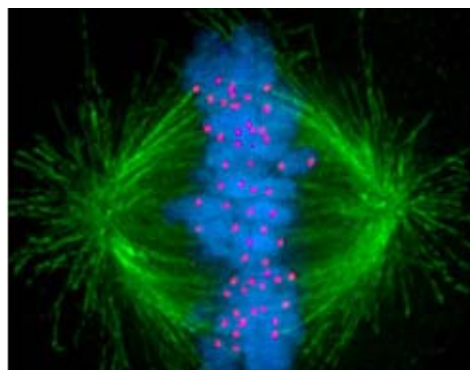
## Testimonial

### **Chromosomes/Kinetochore – Publications** **DeltaVision® Imaging System**

"The **DeltaVision®** is a robust and flexible imaging system and it performs very well for both live-cell and fixed-cell analysis for a wide range of applications. I have had a very positive experience with the **DeltaVision®** and Applied Precision's service and support here at the Whitehead Institute since we purchased the system in 2007, as well as during my stay in Ludwig Institute for Cancer Research in La Jolla, CA. We have access to other imaging systems for specific applications but among the strengths of the **DeltaVision®** is its image quality through deconvolution for sub-cellular structures, such as kinetochore in mitosis (a small structure on each chromosome). The powerful imaging and its ease-of-use has made this an attractive option for people in our lab as well as a variety of other labs at our Institute. I am glad that I made the decision to purchase the **DeltaVision®** and I would definitely make the same choice again."



Iain Cheeseman, PhD, Director of Imaging  
Member, Whitehead Institute  
Assistant Professor of Biology, MIT  
<http://jura.wi.mit.edu/cheeseman>  
Nov 2009



Human tissue culture cell in mitosis shows  
microtubules in green, DNA in Blue and  
kinetochores in red

---

J. Cell Biol., Jul 2009; 186: 173 - 182.

#### **The CENP-S complex is essential for the stable assembly of outer kinetochore structure**

Miho Amano, Aussie Suzuki, Tetsuya Hori, Chelsea Backer, Katsuya Okawa, Iain M. Cheeseman, and Tatsuo Fukagawa  
<sup>1</sup> Department of Molecular Genetics, National Institute of Genetics, The Graduate University for Advanced Studies, Mishima, Shizuoka 411-8540, Japan; <sup>2</sup> Whitehead Institute for Biomedical Research and <sup>3</sup> Department of Biology, Massachusetts Institute of Technology, Cambridge, MA 02142; <sup>4</sup> Graduate School of Medicine, Kyoto University, Sakyo-ku, Kyoto 606-8501, Japan

Molecular Biology of the Cell Vol. 19, 587–594, February 2008

#### **KNL1 and the CENP-H/I/K Complex Coordinately Direct Kinetochore Assembly in Vertebrates**

Iain M. Cheeseman,\*† Tetsuya Hori,‡ Tatsuo Fukagawa,‡ and Arshad Desai\*

\*Ludwig Institute for Cancer Research, and Department of Cellular and Molecular Medicine, University of California San Diego, La Jolla, CA 92093; and †Department of Molecular Genetics, National Institute of Genetics and The Graduate University for Advanced Studies, Mishima, Shizuoka 411-8540, Japan

Genes & Dev., Sep 2008; 22: 2385 - 2399.

#### **A new mechanism controlling kinetochore–microtubule interactions revealed by comparison of two dynein-targeting components: SPDL-1 and the Rod/Zwilch/Zw10 complex**

Reto Gassmann, Anthony Essex, Jia-Sheng Hu, Paul S. Maddox, Fumio Motegi, Asako Sugimoto, Sean M. O'Rourke, Bruce Bowerman, Ian McLeod, John R. Yates, III, Karen Oegema, Iain M. Cheeseman, and Arshad Desai

<sup>1</sup> Ludwig Institute for Cancer Research/Dept of Cellular and Molecular Medicine, University of California at San Diego, La Jolla, California 92093, USA; <sup>2</sup> Laboratory for Developmental Genomics, RIKEN Center for Developmental Biology, Kobe

