

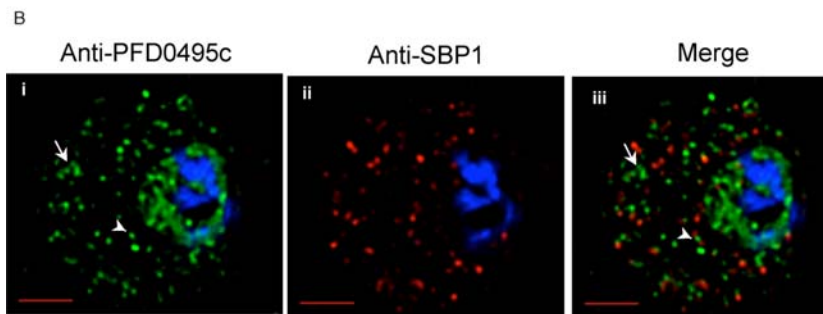
Testimonial

Infectious Disease – Publications *DeltaVision*® Imaging System

"I have used the *DeltaVision*® imaging system for ~ 4 years and our PI, Dr. Kasturi Haldar (Director, Center for Rare and Neglected Diseases), has used the *DeltaVision*® for ~10 years. I find the *DeltaVision*® to be a user-friendly system that provides very good resolution, with excellent signal-to-noise ratio for live-cell imaging of subcellular structures. One major focus of our research is studying how malaria, an intracellular pathogen, delivers proteins to the host cytoplasm to support its growth. We have found *DeltaVision*® to be very valuable in capturing very low signals in the host cytoplasm and in providing the resolution of small structures for quantitative and qualitative analysis. We have also used the system for 3D and time-lapse studies of malaria, salmonella and other pathogens. The data generated by the *DeltaVision*® is reliable and has allowed us to publish multiple papers to support our research. We use the system on a weekly basis and if I were to start a new lab myself, I would not hesitate to purchase a *DeltaVision*®."



Dr. Pamela Tamez
Post-doctoral fellow
University of Notre Dame
<http://www.nd.edu/~haldarlb>
Jan 2010



PFD0495c is found within intraerythrocytic structures, and protein synthesis of the endogenous and transgene product is in-phase and overlapping. 3D7 early schizonts were fixed and probed with antibodies to PFD0495c (i) and Skeleton Binding Protein (SBP1; ii) for immunofluorescence. Endogenous PFD0495c is found associated with the parasite and within intraerythrocytic structures,

PLoS Pathogens August 2008, Vol, 4, Issue 8 ([Quantitative Analysis](#))

An Erythrocyte Vesicle Protein Exported by the Malaria Parasite Promotes Tubovesicular Lipid Import from the Host Cell Surface

Pamela A. Tamez^{1,2}, Souvik Bhattacharjee^{1,2}, Christiaan van Ooij^{1,2}, N. Luisa Hiller³, Manuel Lina⁴, Bharath Balu⁵, John H. Adams⁵, Kasturi Haldar^{1,2*}

¹ Department of Pathology, Feinberg School of Medicine, Northwestern University Chicago, Illinois, United States of America, ² Department of Microbiology-Immunology, Feinberg School of Medicine, Northwestern University Chicago, Illinois, United States of America, ³ Allegheny General Hospital, Allegheny-Singer Research Institute, Center for Genomic Sciences, Pittsburgh, Pennsylvania, United States of America, ⁴ Department of Molecular Biology, Lewis-Sigler Institute for Integrative Genomics, Princeton University,

PLoS Pathogens June 2008, Vol 4, Issue 6 ([Time lapse study](#))

The Malaria Secretome: From Algorithms to Essential Function in Blood Stage Infection

Christiaan van Ooij¹, Pamela Tamez¹, Souvik Bhattacharjee¹, N. Luisa Hiller^{1a}, Travis Harrison^{1b}, Konstantinos Liolios^{1c}, Taco Kooij², Jai Ramesar², Bharath Balu^{3d}, John Adams^{3d}, Andy Waters², Chris Janse², Kasturi Haldar^{1,4*}

¹ Department of Pathology, Northwestern University, Chicago, Illinois, United States of America, ² Department of Parasitology, Malaria Group, Leiden University Medical Center, Leiden, The Netherlands, ³ Center for Global Health and Infectious Diseases, Department of Biological Sciences, University of Notre Dame, Notre

PNAS September 16, 2008 vol. 105 no. 37 14141-14146

The Salmonella virulence protein SifA is a G protein antagonist

Laurie K. Jackson*, Parwez Nawabi*, Cristiana Hentea*, Everett A. Roark*, and Kasturi Haldar†‡

*Department of Pathology, Northwestern University, Feinberg School of Medicine, Chicago, IL 60611; and †Department of Biological Sciences, University of Notre Dame, Notre Dame, IN 46556

Molecular Microbiology (2008) 68(1), 173–185

Esterification of cholesterol by a type III secretion effector during intracellular Salmonella infection

Parwez Nawabi, Drew M. Catron† and Kasturi Haldar*

Departments of Pathology and Microbiology-Immunology, Northwestern University, 303 E. Chicago Avenue, Chicago, IL 60611, USA.